

## Easy Touch Slide-lock Scanner

The slide-lock scanner allows you to lock and unlock test adapters to the tester more efficiently. This new, reliable design may also prolong connector life by locking adapters more firmly in place.

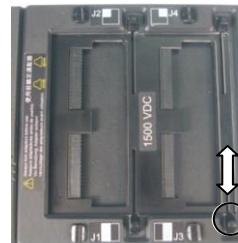
### Overview

#### Traditional Scanner

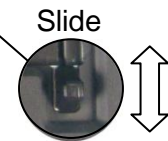


You remove and reattach the J3-J4 cover-plate every time you change adapters.

#### Slide-lock Scanner



No more cover-plates! You move the slides to quickly lock and unlock adapters.



### Installing the Slide-lock Scanner

1. Put the tester in a clean area that is free of static charge. Make sure the tester is off.



2. Remove the slide-lock scanner from its packaging.



3. Remove both cover-plates from the tester.



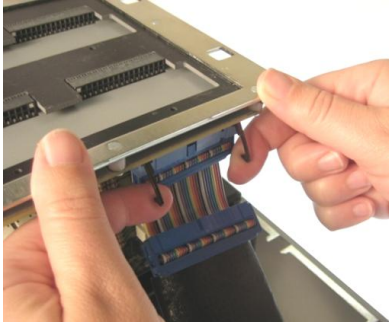
Use a coin or screwdriver to turn the  $\frac{1}{4}$  turn fasteners to the horizontal position.

4. Remove the scanner and put it on top of the tester.



Firmly grasp the scanner by the edges to lift it out.

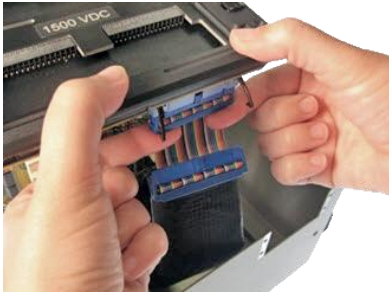
5. Unlatch the scanner cable and put the scanner aside.



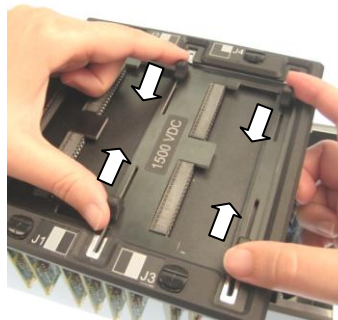
6. Set the new slide-lock scanner on the tester.



7. Attach the scanner cable to the slide-lock scanner.



8. Move the four slides slightly inward.



This allows clearance to more easily put the scanner into the chassis.

9. Insert the slide-lock scanner into the tester.

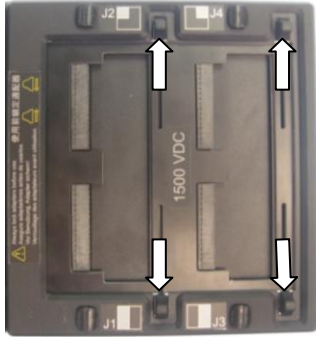


10. Turn each ¼ turn fastener to the vertical position.

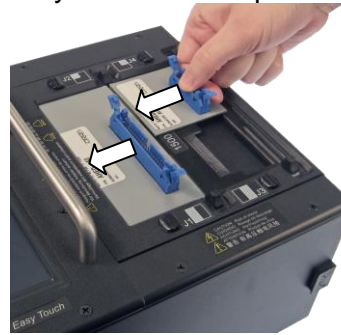


## Installing Adapters

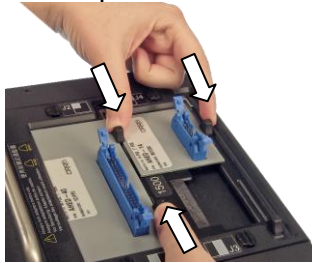
1. Push the slides all the way outward.



2. Fully insert the adapters.



3. Move the slides inward until they tighten on the adapters.

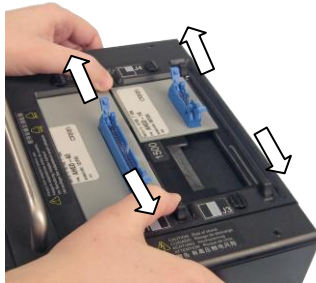


The slides wedge down as you move them inward.

If you can't move a slide inward, the adapter may not be fully inserted.

## Removing Adapters

1. Move the slides all the way outward.



2. Remove the adapters. As with other Cirris scanners, adapters in the J3 and J4 positions must be removed first.

