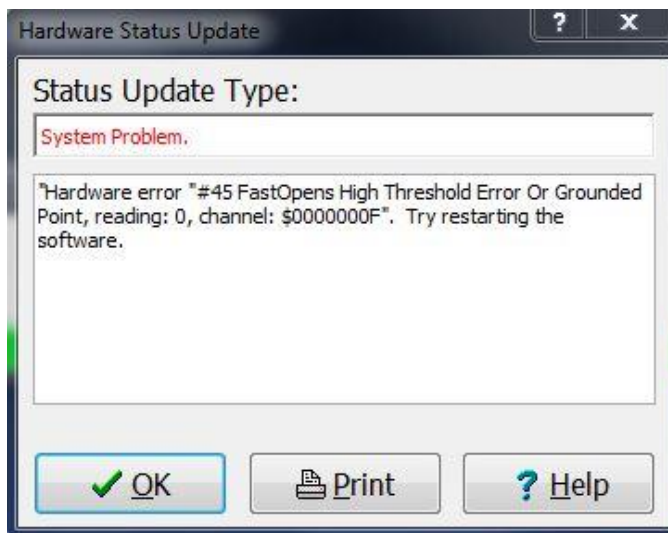

Earth Ground Point Support—For Cirris CH2 Only

EGPS allows the CH2 to test devices connected to earth ground. You will know if you need EGPS if you receive the following error message when booting the tester and software.



Two power supply cables, plugged into the back of your tester, will provide earth ground point support. Make sure your tester is turned OFF before connecting the power supply cables. Shut off power to the tester by exiting out of the Easy-Wire™ software.

Note: Only one set of power supply cables is needed for a multi-box system.

Note: The set of two 12V Earth Ground Power Supplies do not take the place of the Standard AC Power Cord on the Base Unit. All three cords are required.

Connecting Power Supply Cables to Tester

1. **Shut off power to tester** by exiting out of the Easy-Wire software.
2. Check that **red spacers** are present before connecting power supplies to the tester.

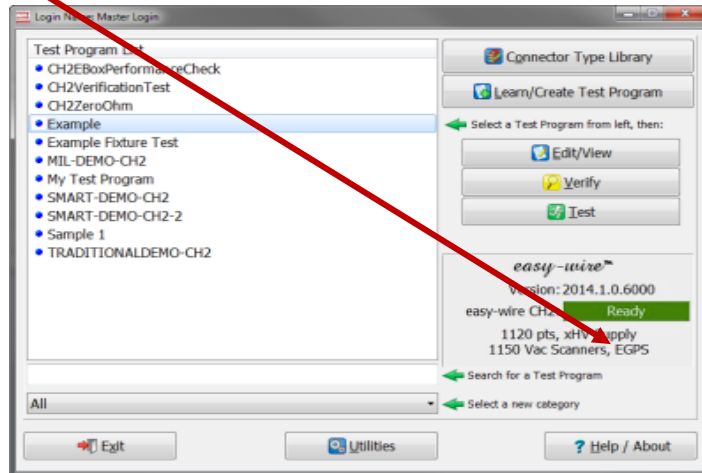
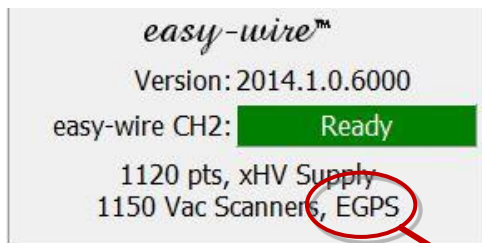


3. Insert the power supply cables into the back of the tester. The two power supplies are identical and can be plugged in to either socket.



4. Restart tester and software.

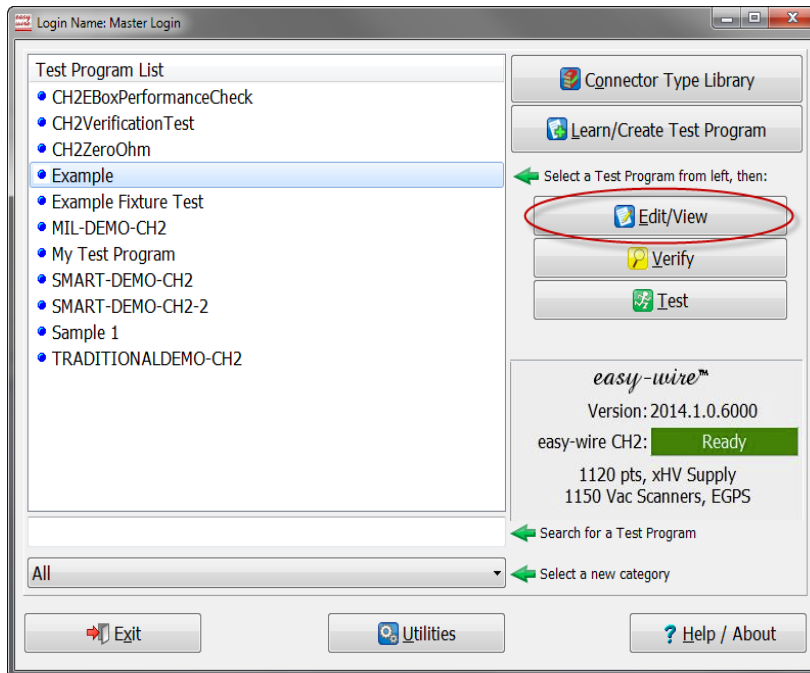
5. EGPS now appears on the main menu of Easy-Wire. The system is now ready to test with earth ground point support.



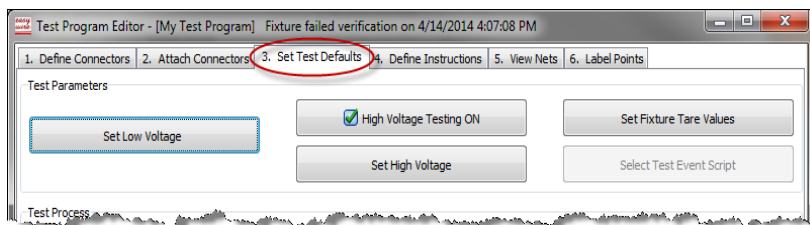
Before Hipot Testing

High voltage must be turned off in nets connected to earth ground.

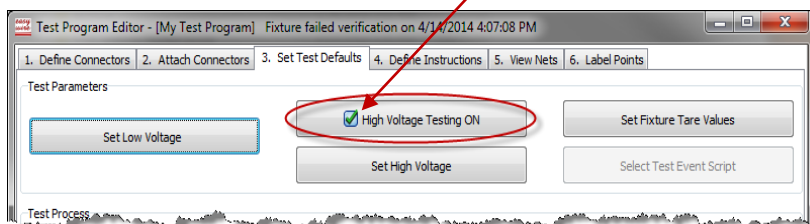
1. Open Easy-Wire software. From the main menu page, select your test and click “Edit/View”.



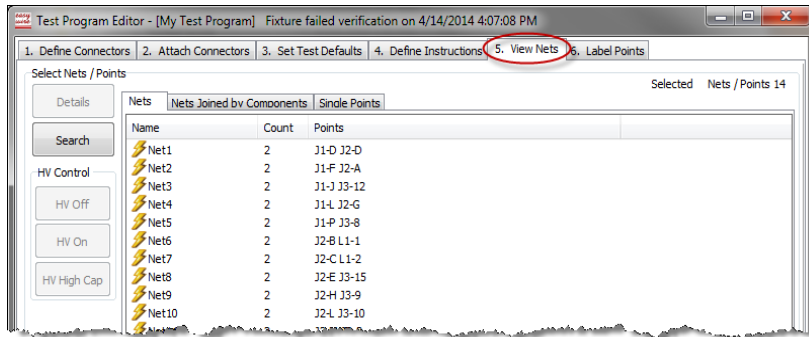
2. Select tab 3, “Set Test Defaults”.



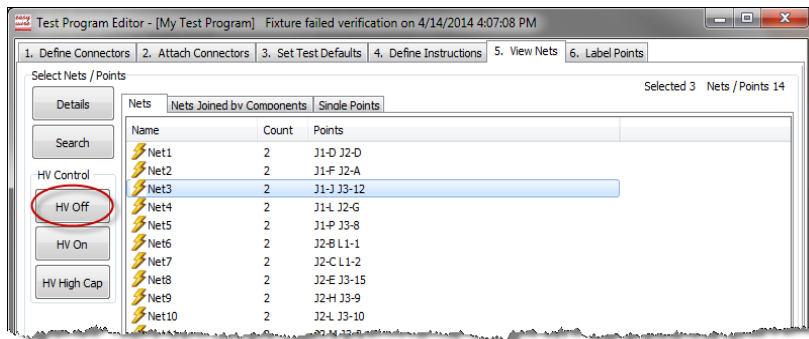
3. Check the box for “High Voltage Testing ON”.



4. Select tab 5, "View Nets".



5. Select each net with a connection to ground and click "HV Off".



6. Click "Done" when finished to save changes and return to the Easy-Wire main menu.

Note: Low Voltage is unaffected by testing with EGPS.

If you have any questions concerning EGPS, contact our technical support team at 1-800-441-9910.