

Before Starting the other Demos, Import the Updated Test Program!

Cirris recently updated the demo CR and CH2 test programs. Please import the test program that matches your tester by following the steps below.

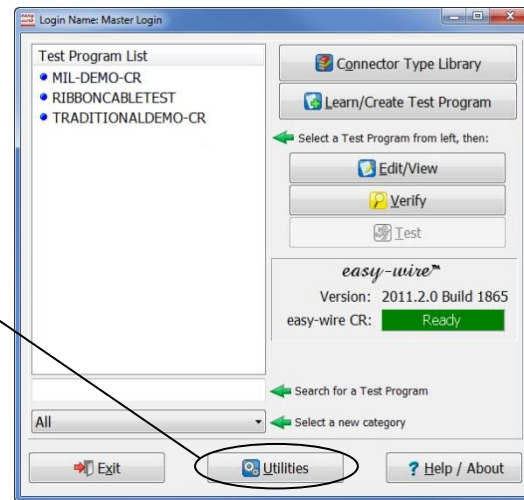
1. If it's not already plugged in, plug in the USB thumb drive you used to install easy-wire.



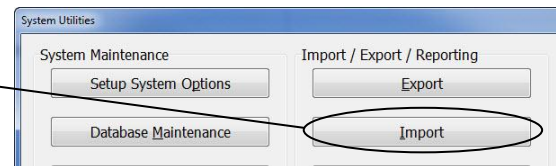
2. If easy-wire is not running, double-click the easy-wire icon on your desktop, and log in to easy-wire.



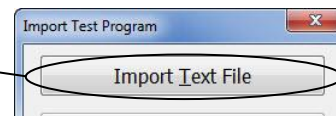
3. In the easy-wire main menu, click **Utilities**.



4. Click **Import**.

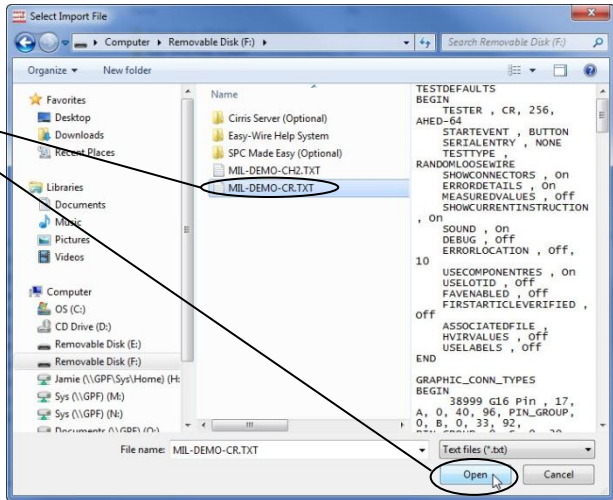


5. Click **Import Text File**.

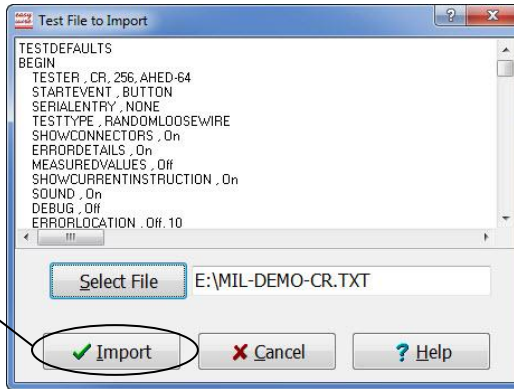


6. If you have a CR, browse to the thumb drive location, select **MIL-DEMO-CR.TXT** and click **Open**.

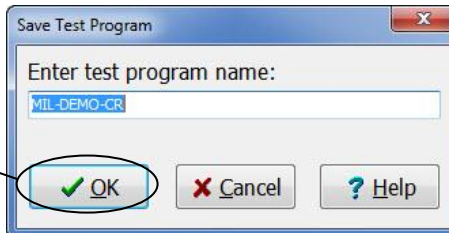
If you have a CH2, browse to the thumb drive location, select **MIL-DEMO-CH2.TXT** and click **Open**.



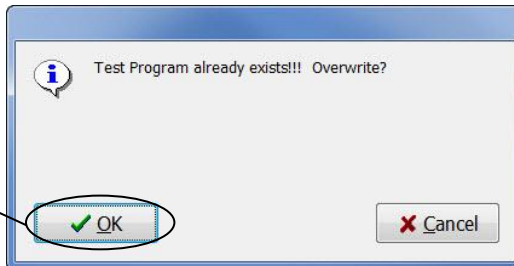
7. Click **Import**.



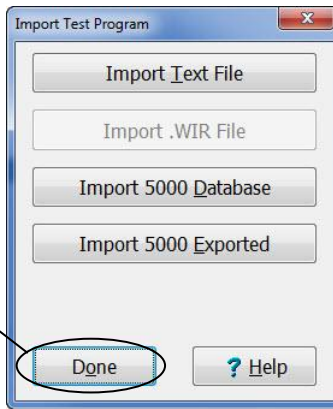
8. The test name you want will be in the text box, click **OK**.



9. To overwrite the original test program, click **OK**.



10. Click **Done**.



11. Click **Done** to return to the main menu.

