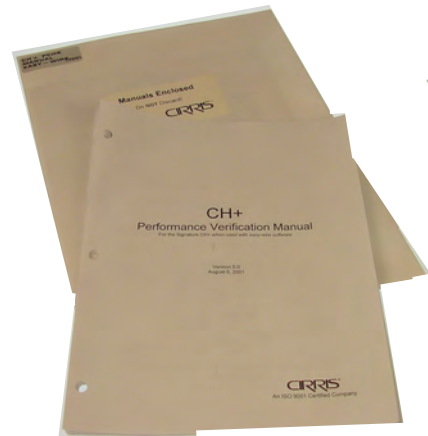
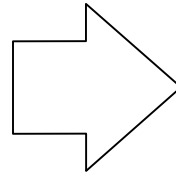
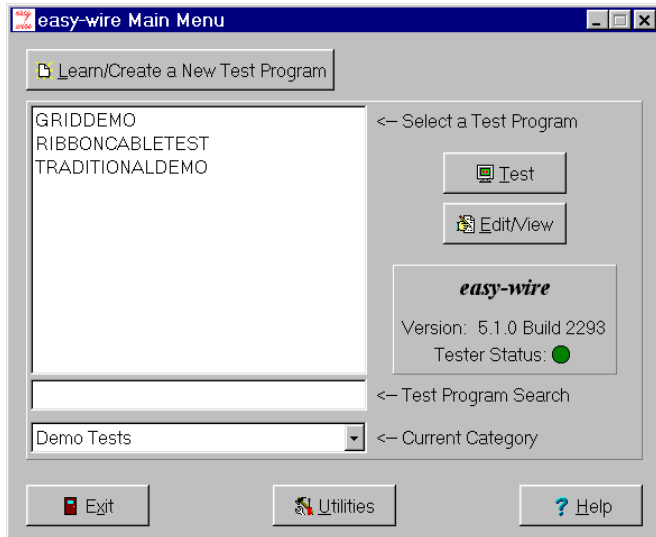


Before You Start

1 - Choose the correct manual according to which software you are using on the CH+.

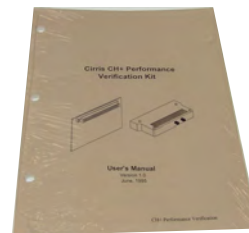
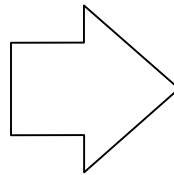
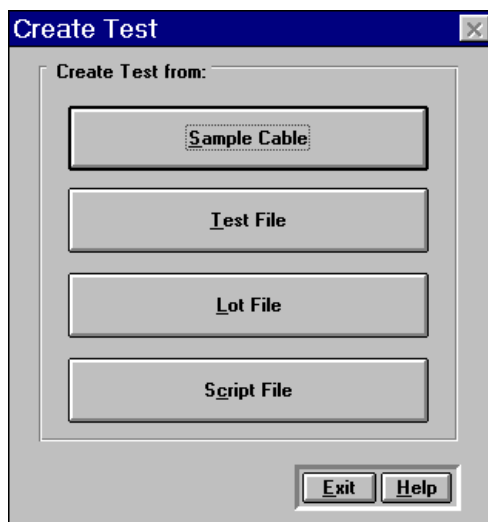
For *easy-wire* software...

use this manual.



For Signature Plus Series Test Control software...

use this manual.



2 – Check that your CH+ software is the current version.

To see the current versions CH+ software, enter the URL <http://www.cirris.com/support/support.html>, then click on *Download Software*. If you have *easy-wire* software, look on the main menu screen to see your software version. To check the version of Signature Plus Series Test Control software click the *Help* button, click on *Help* in the menu bar, then click on *Version*.